

Tabarelli SpA

For more than 50 years, Tabarelli has been building with passion and dedication hydraulic loaders for moving various types of materials.

All our loaders are designed and built to the basic characteristics of a modern, efficient loader: **speed, strength and reliability** mean that the operator can perform his duties in top conditions.

Each step, from project definition and components' choice to the final building, are followed with maximum attention, using the best and most advanced technologies.

Powerful motors, high performance hydraulic system, constructive care and simplicity, stability and various combinations of straddle and equipment guarantee achieving best performance.

In addition to this, more details witness our commitment to provide efficient long-lasting tools, not only in performance but also comfortable simple cabin, easy maintenance and assistance, good availability of spare parts and attention to special requirements.

All this guarantees maximum functionality and return on investment.

T308 Maximum Speed!

The T308 is the ideal loader for car wrecking work, waste selection and treatment, moving lumber and metals. Its small size makes it ideal above all for limited working spaces.

The variety of possible configurations makes it suitable to fulfill different requirements and needs by customizing the assembly.

A high performance turbo diesel engine complete with balancing countershafts for vibration and noise reduction together with latest generation load sensing hydraulic system and liftable fully accessorized operator's cab, let T308 achieves maximum levels of performance and comfort in its category, while structural simplicity and reduced maintenance guarantee lowest operating costs.

OFFICINA MECCANICA
F.lli TABARELLI S.p.A

Via Carlo Alberto dalla Chiesa, 2 - 37060 MOZZECANE (VR) - ITALY
Tel. +39 045 7930007 - Fax +39 045 7930214
info@tabarelli.com - www.tabarelli.com

T308



TABARELLI



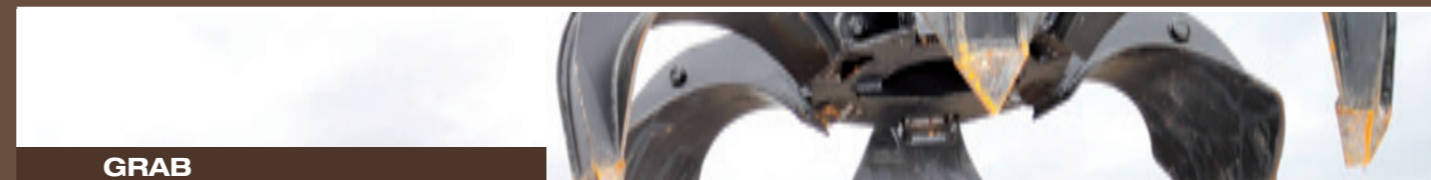
UNDERCARRIAGE

Shift	axial piston engine with start-up and brake control valve
gearbox	with 2 gears and electro-hydraulic control
axles	industrial, with epicycloidal reduction gear in the hubs
rims	7.00/20 with 8 holes
wheels	8 super-elastic tyres 9.00/20
brake	differential-gear integrated brake, with negative control and electro-hydraulic release from the cabin
Speed	
1 st	0-3 km/h
2 nd	0-12 km/h
Shovel	front shovel



ARM

Frame	high-resistant steel
Bushings and pins	special case-hardened steel



GRAB

6-element cactus grab, 1.8 m opening radius, 700 kg weight, with continuous hydraulic rotation in both directions



WEIGHT

approx. 16 ton when working

UPON REQUEST

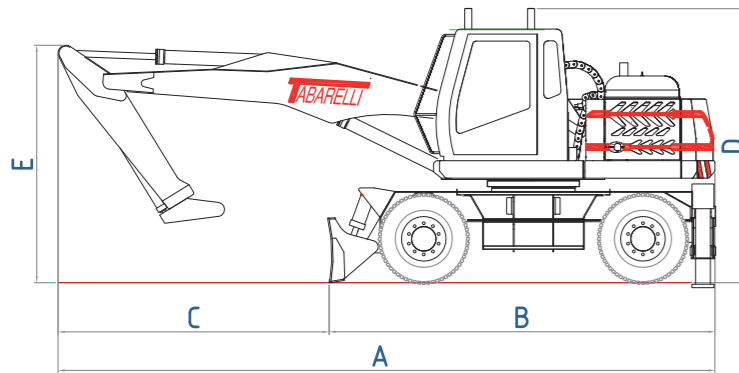
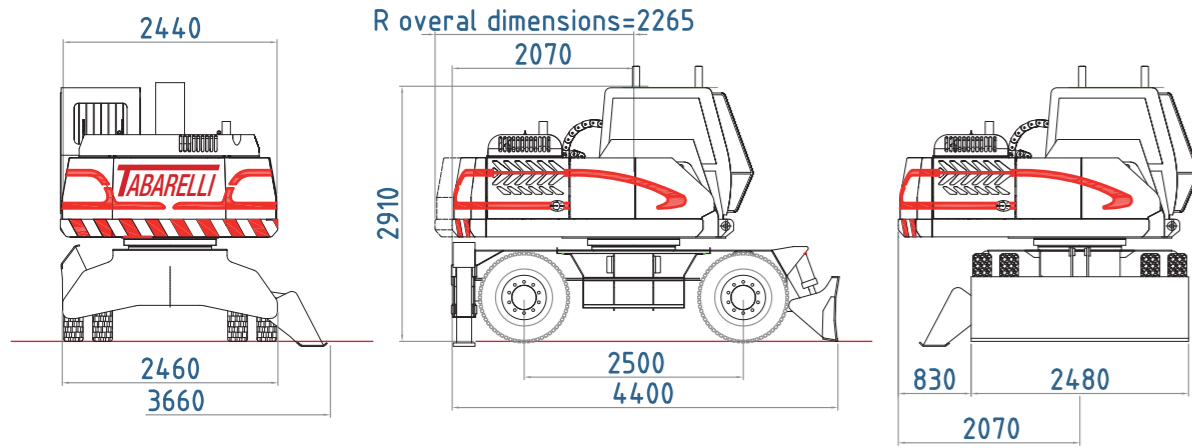
- 2 compass-opening rear stabilisers
- cabin room air-conditioning
- cabin room stereo system
- double traction
- automatic greasing system for arm and turret
- magnetic lifting system



Top and very fast performance efficiency, thanks to T308!



T308



dimensions (mm)	7.5 m extension version	7.5 m version	8.2 m version
A	7490	7500	7500
B	4400	4400	4400
C	3090	3050	3310
D	3120	3120	3120
E	2710	2960	3350

EQUIPMENT

- Front shovel
- Rear stabilisers
- Double traction
- Two-speed gearbox
- Oscillating axle with hydraulic clamp
- Hydro-powered steering
- Solid super-elastic tyres
- Rubber intermediate rings
- Cabin vertical hydraulic lifting
- Cabin heating
- Air-conditioning
- Car radio
- Automatic greasing system
- Magnetic system
- Arm with hydraulic extension, total length from fifth wheel centre: 7.5 m
- Arm with secondary monolithic arm, total length from fifth wheel centre: 7.5 m
- Arm with secondary monolithic arm, total length from fifth wheel centre: 8.2 m

● STANDARD ■ OPTIONAL

TECHNICAL CHARACTERISTICS

ENGINE

Type	diesel, 4-stroke, 4 cylinders in line, turbo-charged
Engine capacity	4.5 l
Cooling	liquid
Max power	74 kW (105 HP)
Injection	mechanical
Air filter	dry, 2-phase with pre-filter
Tank capacity	190 l
Electrical system	12 volt
Batteries	115 Ah

HYDRAULIC SYSTEM

Main pump	axial piston and variable-displacement pump with pressure cutting and oil delivery functions depending on requirement
max capacity	160 l/min
max pressure	280 bar
Adjustment	Load sensing with a regulator at constant power and score cut function. All movements can be manoeuvred in parallel and without reciprocal influence
Heat exchanger	air-oil combined type, with by-pass valve coupled elements
Filtering	complete on return to the tank
Tank capacity	270 l

TURRET ROTATION

Engine	with axial pistons, load sensing distribution element and protection valves
Reduction gear	epicycloidal
Fifth wheel	special steel, with 2 ball rings and internal hardened gear

CABIN

Operator cabin	wide and comfortable, heated, soundproofed, can be hydraulically lifted by vertical movement. Operator view of approx. 4.2 m
Seat	adjustment for: suspension, seat forward movement, backrest tilting, armrest adjustment
Servo controls	
main	armrest-integrated, with cross movement
shift	2-lever pedal
auxiliaries	electric control

EASY TO USE

Structural and maintenance simplicity make all standard operations performed during machine life very easy. Spacious, comfortable operator's cab and simple clearly arranged controls allow immediate familiarization with the machine, obtaining best performance quickly. Wide access areas, easy control and adjustment mean that every maintenance operation can be done in a short time in order to reduce down-time, a great advantage of productivity!

ECONOMIC CONSUMPTION

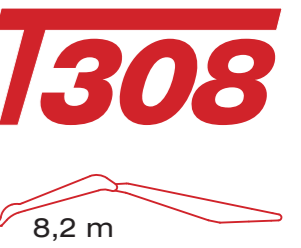
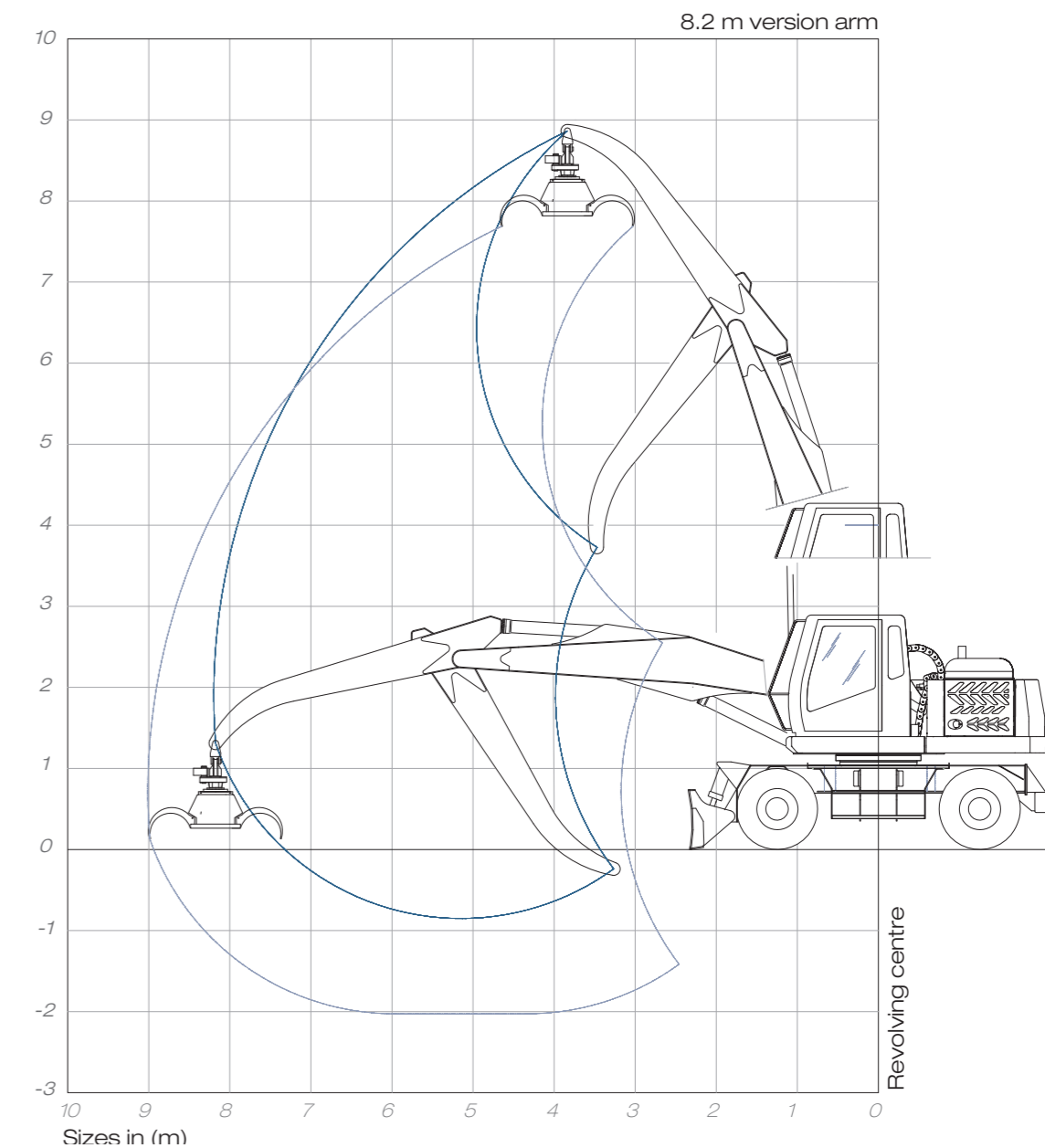
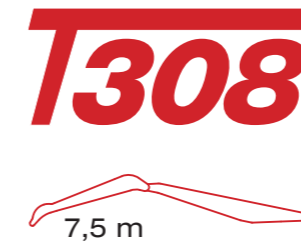
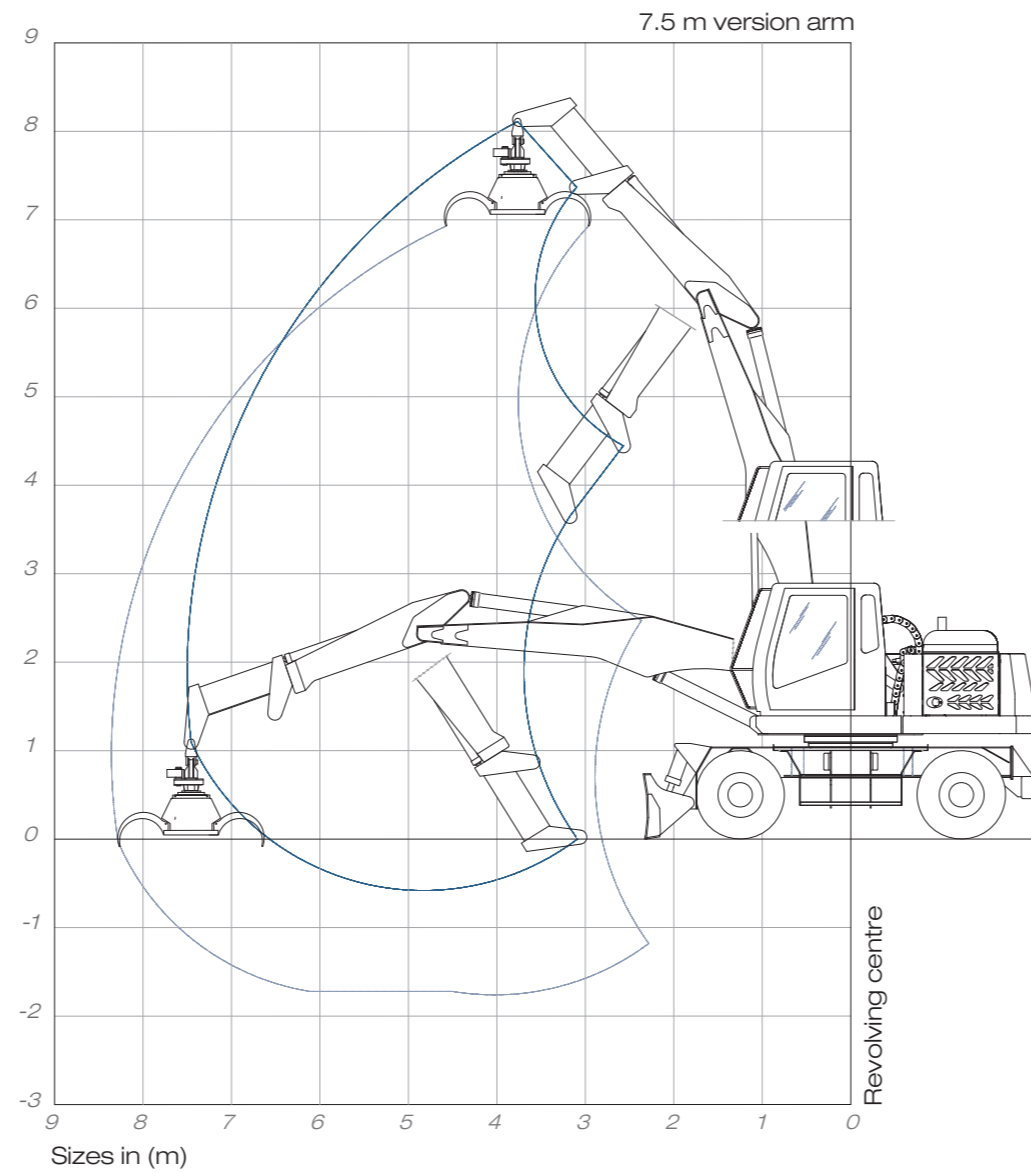
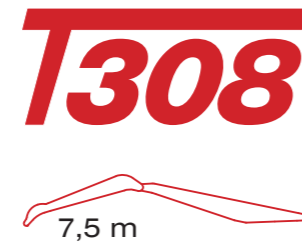
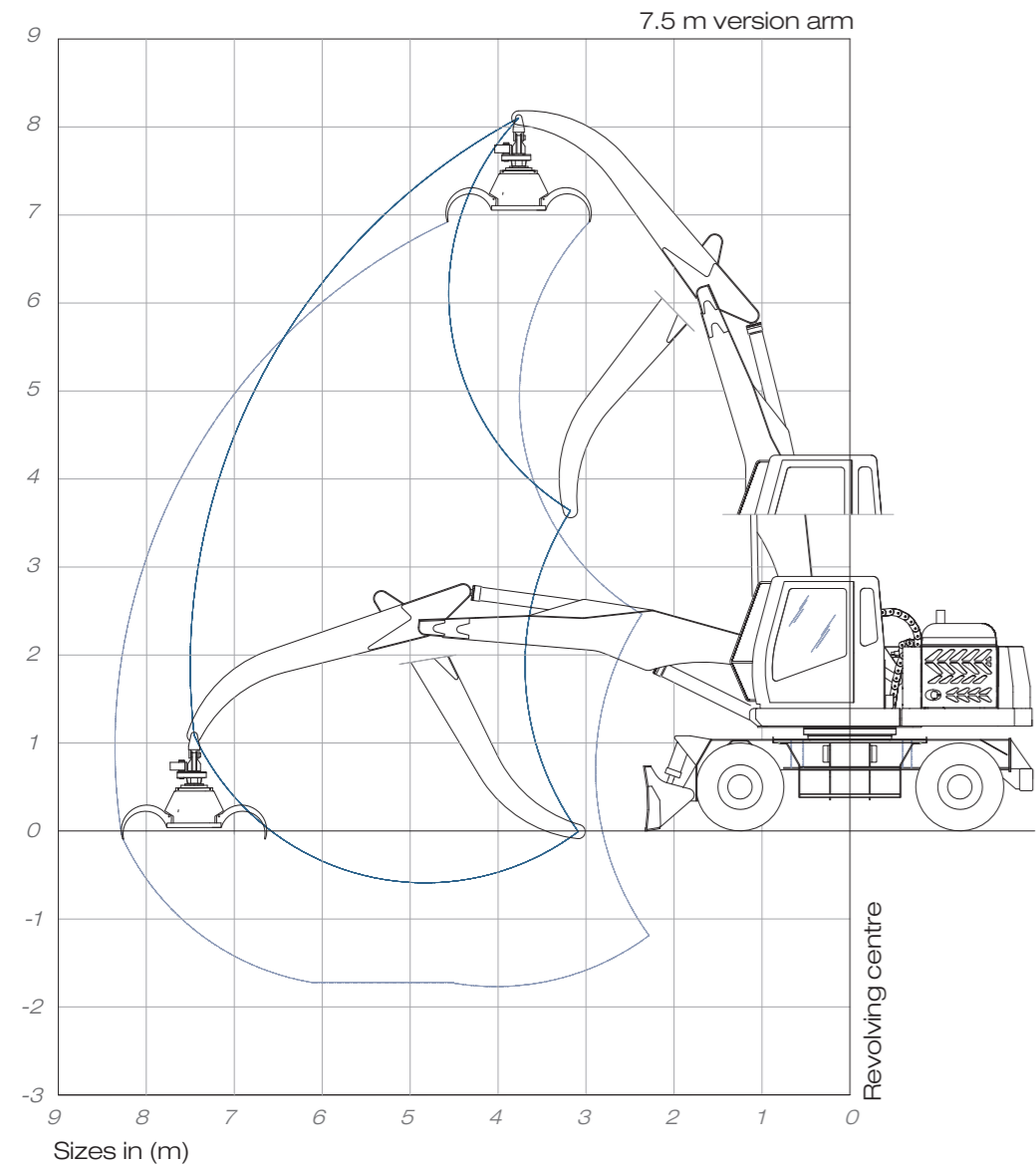
The 74 kW turbo diesel engine, suited to the machine's size means containing consumption without waste, with operating costs reduction.

Certain devices such as the factory-mounted balancing countershafts add greater comfort features to the machine, reducing operator fatigue.

TIRELESS

The T308 moves and works non-stop with speed and precision. Sturdiness and power mean it can perform all work with maximum efficiency and comfort for the operator. Reliability and operating continuity are crucial factors for machine performance: with its characteristics, the T308 guarantees achieving these goals and the return on your investment.





height	set-up												
7.0		4,8	4,8	4,2	3,9	3,9	3,4						
6.0		4,9	4,9	4,3	3,8	3,8	3,3	3,5	3,4	2,6			
5.0		5,0	5,0	4,4	3,9	3,9	3,4	3,5	3,5	2,6			
4.0		4,9	4,9	4,2	4,1	4,1	3,4	3,5	3,4	2,6	3,1	2,7	2,0
3.0		5,3	5,3	4,5	4,3	4,3	3,3	3,6	3,4	2,5	3,1	2,7	2,0
2.0		5,8	5,8	4,3	4,5	4,2	3,2	3,7	3,3	2,5	3,1	2,6	2,0
1.0		5,9	5,9	4,2	4,6	4,1	3,1	3,7	3,2	2,4	3,0	2,6	2,0
0.0		5,7	5,5	4,1	4,4	4,0	3,0	3,5	3,2	2,4	3,0	2,3	1,8
RANGE OF ACTION		4,0		5,0		6,0		7,0		7,5			

• The values, indicated in tons, are to be considered as: at hook, with no lifting device applied; with machine idle, on a flat and horizontal surface, not soft, and with oscillating axle blocked.

Max longitudinal capacity Max capacity at 360° ISO 10567 capacity

ON WHEELS SHOVEL + 2 BRACKETS

REMARK: The data and weights given herein are indicative and not binding; Tabarelli reserves the right to carry out any modification as deemed necessary.



height	set-up												
7.0					4,0	4,0	3,5						
6.0					3,9	3,9	3,4	3,6	3,5	2,6			
5.0					4,0	4,0	3,5	3,5	3,5	2,6			
4.0		4,9	4,9	4,3	4,2	4,2	3,4	3,6	3,5	2,6	3,2	2,8	2,1
3.0		5,4	5,4	4,6	4,4	4,4	3,3	3,7	3,4	2,6	3,2	2,8	2,1
2.0		5,9	5,9	4,4	4,6	4,3	3,2	3,8	3,4	2,5	3,2	2,7	2,1
1.0		6,1	6,1	4,3	4,7	4,2	3,2	3,8	3,3	2,5	3,1	2,7	2,0
0.0		5,8	5,6	4,2	4,6	4,2	3,1	3,6	3,3	2,5	3,1	2,4	1,8
RANGE OF ACTION		4,0		5,0		6,0		7,0		7,5			

• The values, indicated in tons, are to be considered as: at hook, with no lifting device applied; with machine idle, on a flat and horizontal surface, not soft, and with oscillating axle blocked.

Max longitudinal capacity Max capacity at 360° ISO 10567 capacity

ON WHEELS SHOVEL + 2 BRACKETS

REMARK: The data and weights given herein are indicative and not binding; Tabarelli reserves the right to carry out any modification as deemed necessary.



height	set-up												
8.0					3,9	3,9	3,4						
7.0					3,7	3,7	3,2	3,4	3,4	2,6			
6.0					3,7	3,7	3,2	3,3	3,3	2,7			
5.0					3,8	3,8	3,3	3,3	3,3	2,7	3,0	2,8	2,1
4.0		4,8	4,8	4,2	4,0	4,0	3,4	3,4	3,4	2,6	3,0	2,8	2,1
3.0		5,3	5,3	4,6	4,2	4,2	3,3	3,6	3,4	2,5	3,1	2,7	2,0
2.0		5,7	5,7	4,3	4,5	4,2	3,2	3,7	3,3	2,5	3,1	2,7	2,0
1.0		5,9	5,9	4,2	4,6	4,1	3,1	3,7	3,2	2,4	3,1	2,6	2,0
0.0		5,7	5,4	4,1	4,5	4,0	3,0	3,6	3,2	2,4	2,9	2,6	2,0
RANGE OF ACTION		4,0		5,0		6,0		7,0		7,0		8,2	

• The values, indicated in tons, are to be considered as: at hook, with no lifting device applied; with machine idle, on a flat and horizontal surface, not soft, and with oscillating axle blocked.

Max longitudinal capacity Max capacity at 360° ISO 10567 capacity

ON WHEELS SHOVEL + 2 BRACKETS

REMARK: The data and weights given herein are indicative and not binding; Tabarelli reserves the right to carry out any modification as deemed necessary.

