

SWL 2820

Skid Loader



- **41.7kW**
Engine power
- **2830kg**
Machine weight
- **750kW**
Rated load



MANDAMAT

2020 Route d'Heyrieux

69360 SAINT-SYMPHORIEN-D'OZON

TEL : 04.72.76.23.93 / contact@mandamat.com



Strong Power



The customized engine imported with original packaging features strong power, high reliability, low noise, energy saving and environmental protection. In addition, it can meet the emission standards all over the world.

Curve Hoisting Trajectory



With the specially optimized structural design, the machine enjoys a larger hoisting height and unloading distance compared with the machines of the same type.



Pilot Handles

Traveling and actions are all controlled by pilot handles, featuring light and handy and agile operations.



Double-accelerator Control

The SWL2820 skid loader is of the double-accelerator control mode. The manual accelerator control is used for working places requiring a constant power, while the foot pedal accelerator is used for excavation and loading.

Closed Hydrostatic Traveling System

The closed hydrostatic traveling system is equipped with an advanced anti-overloading hydraulic unit, a large-torque motor, a large driving force, and a braking function, thus ensuring safety and reliability.

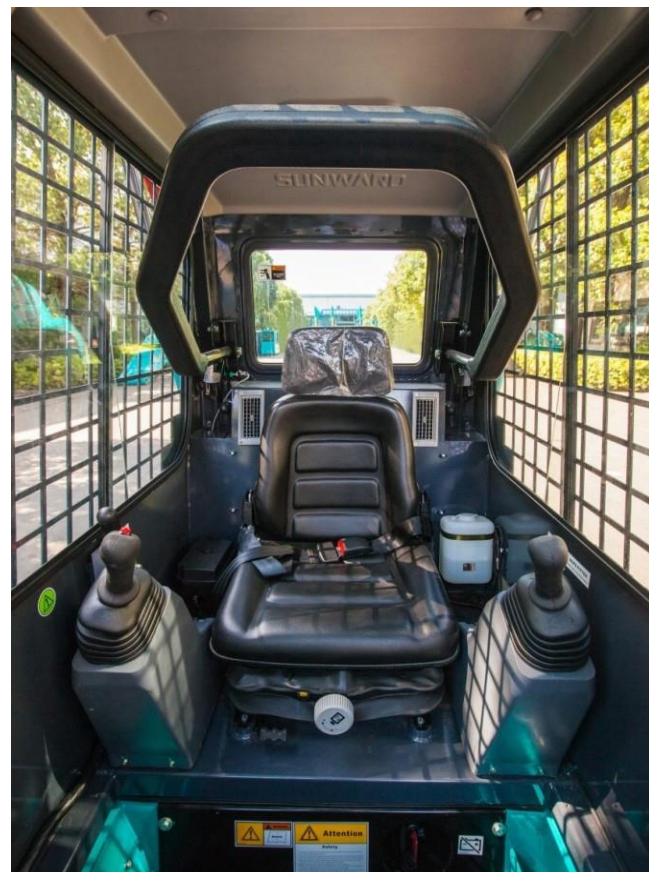


Standard and Universal Quick Change Mechanism

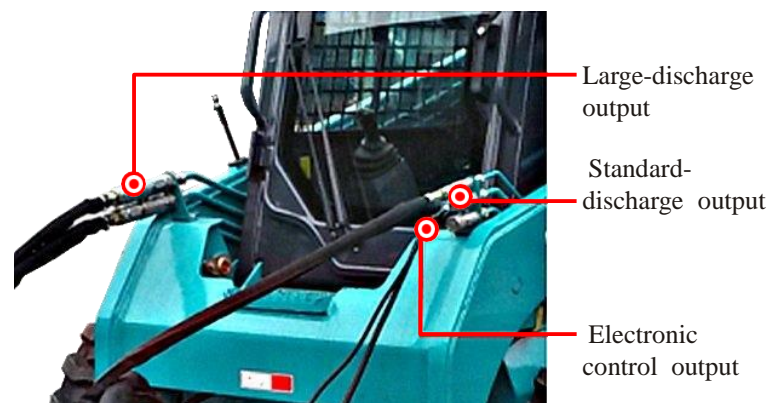
An internationally universal quick change mechanism is adopted so that various accessories can be replaced fast and conveniently. This skid loader can be installed with the accessories provided by most other manufacturers.



- The space is wide, the vision is good, operators can get in and out the cab easily, and all buttons and switches are near at hand.
- The cab structure reaches both FOPS and ROPS standards.
- A three-level electronic control startup protection system is adopted.
- All warning lights, warning signals and a back-up beeper are configured.
- The rear window can be removed.



A fan heater or an air conditioner may be configured in accordance with the operation site.



- Large-discharge output
- Standard-discharge output
- Electronic control output

A large-discharge system can be selected. With the confluence of two pumps, the product increases the output discharge to meet the demands of more large-discharge accessories such as milling machine.

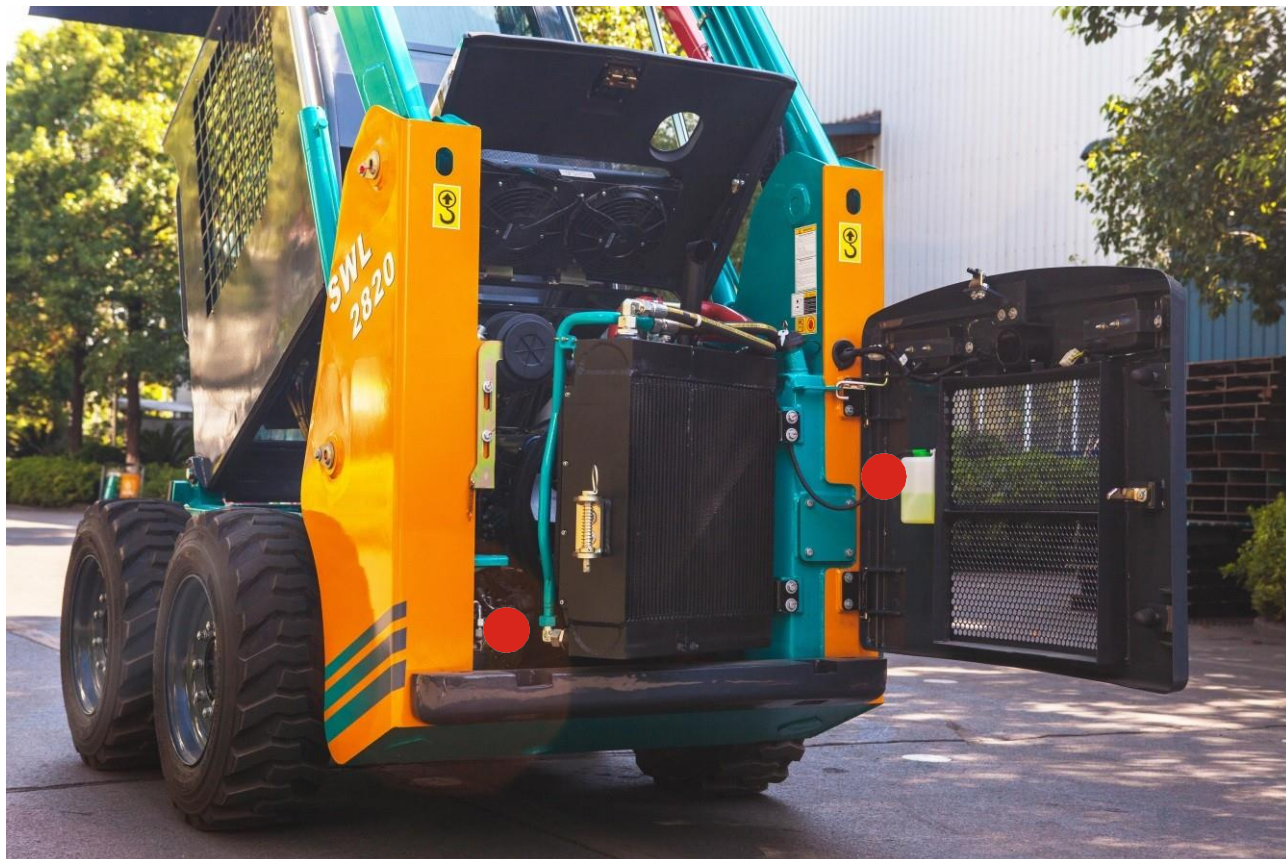
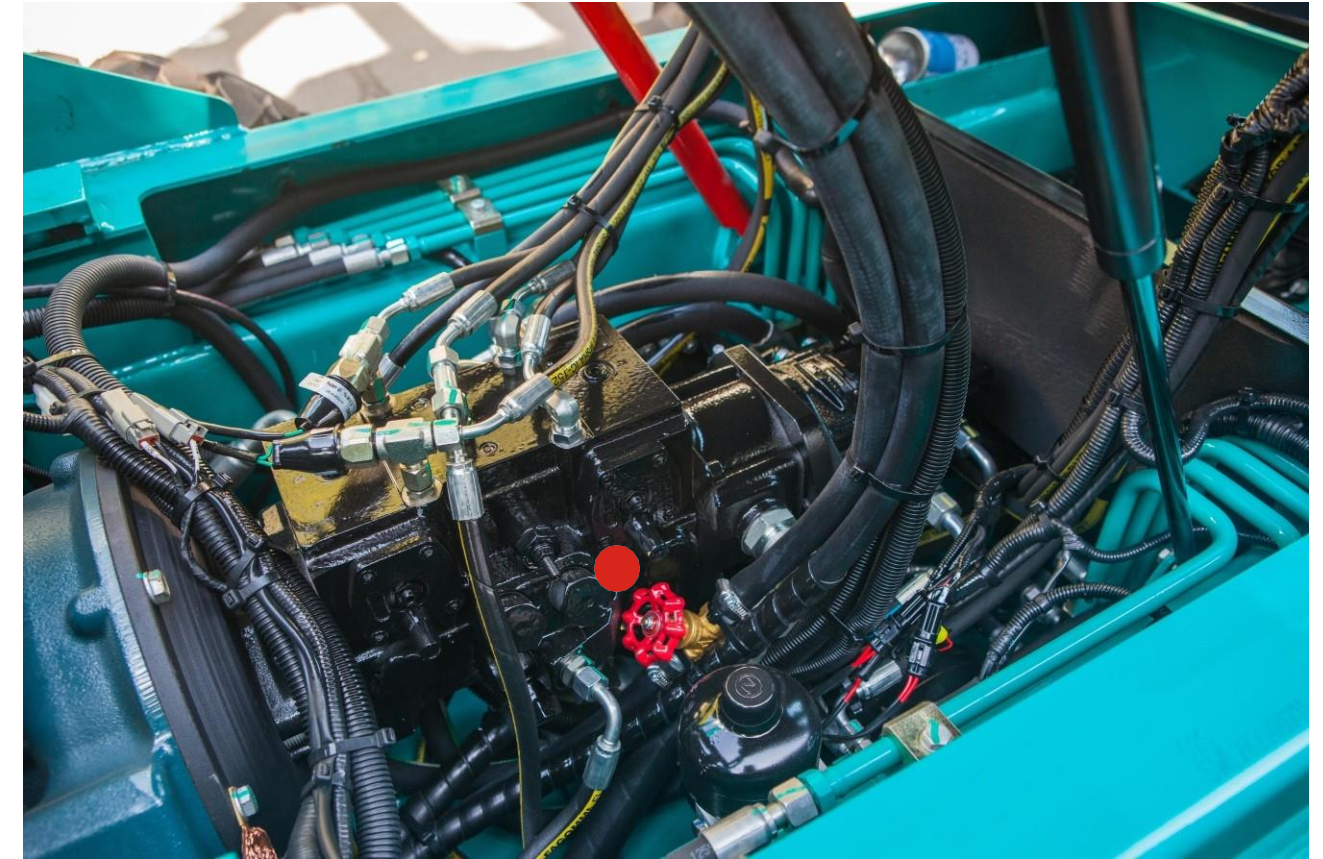


Standard Hydraulic Horizontal Hoisting

When the boom is rising, the angle between bucket and ground will not change to prevent the materials from falling, thus reducing the labor intensity of operators.

Emergency Descent Function of Working Unit

The boom can safely conduct the emergency descent in case of the stalling of engine.



- Air filter
- Oil return filter
- Hydraulic oil tank cap
- Fuel filter
- Oil-water separator
- Engine oil tank cap
- Oil filter
- Auxiliary tank
- Heater valve switch

Equipment

The standard and optional equipment varies from country to country. For more information, please contact with us.

Cab

FOPS/ROPS	<input type="radio"/>
FOPS/ROPS Cab	<input type="radio"/>
FOPS/ROPS	<input checked="" type="radio"/>
FOPS/ROPS Canopy	<input checked="" type="radio"/>
Safety armrest	<input checked="" type="radio"/>
Adjustable seat	<input checked="" type="radio"/>
Centralized panels	<input checked="" type="radio"/>
Double-accelerator Control	<input checked="" type="radio"/>
Pilot control handles	<input checked="" type="radio"/>
Fan heater	<input checked="" type="radio"/>
Air conditioner	<input type="radio"/>

Hydraulic System

Emergency descent	<input checked="" type="radio"/>
Leveling function	<input checked="" type="radio"/>
General discharge	<input checked="" type="radio"/>
Large-float system	<input type="radio"/>

● Standard equipment

○ Optional equipment

Working Unit

Standard quick change mechanism	<input checked="" type="radio"/>
Standard bucket	<input checked="" type="radio"/>
Additional counterweight	<input type="radio"/>
Standard tires	<input checked="" type="radio"/>
Solid tires	<input type="radio"/>
Various accessories	<input type="radio"/>

Electrical System

Front work light	<input checked="" type="radio"/>
Warning light	<input checked="" type="radio"/>
Back-up beeper	<input checked="" type="radio"/>
Horn	<input checked="" type="radio"/>
External power supply	<input type="radio"/>
Electronic accessories control system	<input type="radio"/>
Rear work light	<input type="radio"/>



Product Parameter

Operation Parameter		
A	Maximum operation height	mm 3850
B	Height between bucket pin and ground	mm 3002
C	Height between cab top and ground	mm 2014
D	Maximum height between horizontal bucket bottom and ground	mm 2834
E	Length not including accessories	mm 2604
F	Length including standard bucket	mm 3318
G	Unloading angle at the largest height	° 42
H	Unloading height	mm 2320
J	Unloading distance	mm 475
K	Flip angle of bucket on the ground	° 30
L	Flip angle of bucket at the largest height	° 97
M	Wheelbase	mm 987
P	Ground clearance	mm 220
Q	Departure angle	° 25
R	Front turning radius not including accessories	mm 1235
S	Front turning radius	mm 1953
T	Rear turning radius	mm 1531
U	Tail length	mm 1021
V	Wheel span	mm 1293
W	Bucket width	mm 1600
Performance		
	Overall weight	kg 2830
	Loading capacity	kg 750
	Tipping load	kg 1500
	Digging force of bucket	kg 2000
	Digging force of boom	mm 1900
	Maximum traveling speed	km/h 13
	Bucket capacity	m ³ 0.4
Engine		
	Brand	KUBOTA
	Model	V2403M-T
	Type	4-cylinder, water cooling, diesel engine
	Emission standard	Tier4 F
	Power	kW/rpm 41.7/2600
	Maximum torque	N·m/rpm 163.6/1800
Electrical System		
	Starting motor	V/kW 12/2.0
	Generator	V/A 12/60
	Battery	Ah 120
Fueling Amount		
	Hydraulic oil tank	L 35
	Fuel tank	L 75
Hydraulic System		
	Standard discharge	L/min 67
	Large discharge	L/min 98
	Standard working pressure	bar 210
	Large-discharge working pressure	bar 165

