



Barford TR6536 Tracked Stockpile Conveyor



Cat 2.2 engine, 65ft x 36" c/w Large Rubber Lined Feed Hopper, Galvanized Inner Telescopic Legs, Galvanized Roller Guards

Options: Dual Power, Hopper Extensions. Chevron Belt. Overband Magnet



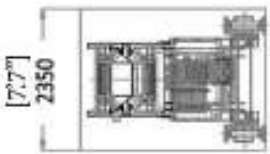
MandaMat

VENTE PIÈCES & MATÉRIELS TP - CARRIÈRES - RECYCLAGE - MANUTENTION

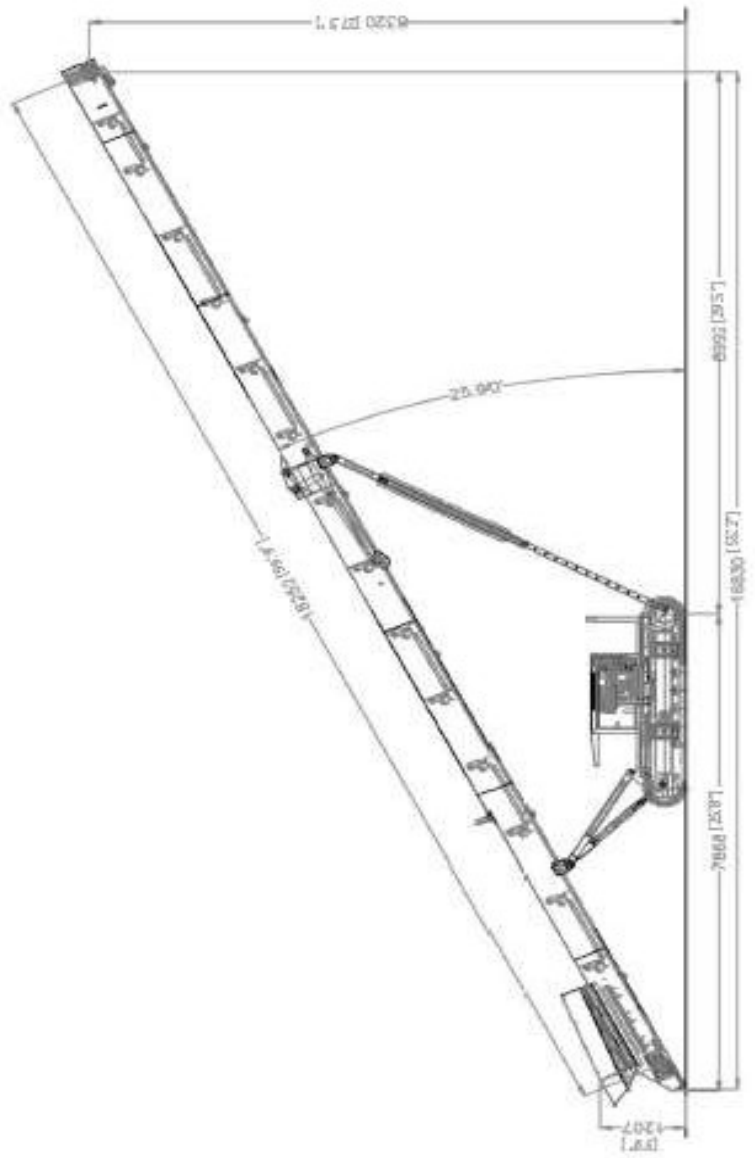
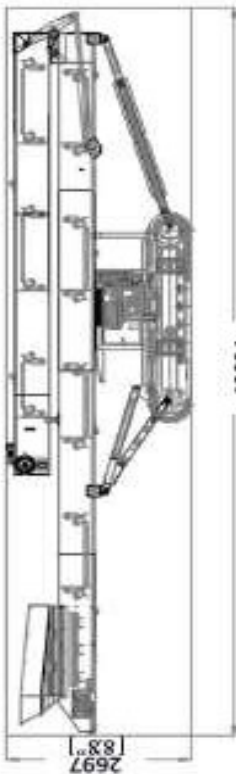


Barford TR6536 Tracked Stockpile Conveyor

Weight: 10,000kg/22,000lbs



Internal sizes of 40ft High Cube Shipping Container



MandaMat

VENTE PIÈCES & MATÉRIELS TP - CARRIÈRES - RECYCLAGE - MANUTENTION